

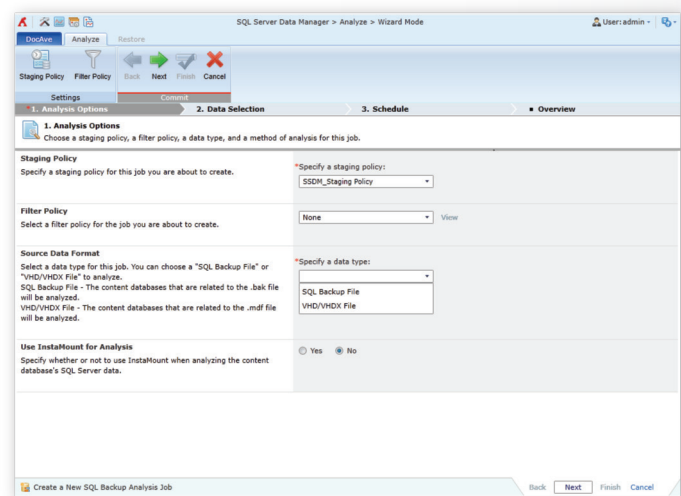
DOCAVE SQL SERVER DATA MANAGER

FOR MICROSOFT® SHAREPOINT® SQL SERVER® DATA MANAGEMENT

Protect. Deliver full-fidelity, item-level restore capabilities directly from Microsoft SQL Server backups or live content databases for fast SharePoint Server 2016, SharePoint Server 2013, and SharePoint Server 2010 content recovery.

SQL SERVER BACKUP DATA ANALYSIS

- **Data Retrieval** – Analyze SQL Server backups, transferring data to a temporary SQL Server database to enable data retrieval
- **Staging Policy** – Configure a reusable staging policy to specify the SQL Server backup files and temporary database, input database access credentials, and prioritize database space allocation if temporary database thresholds are met or exceeded
- **Filter Policy** – Quickly identify files for recovery with customizable filter policies based on file names or metadata
- **Analysis Data Retention** – Enable the automatic deletion of databases that are used to store analyzed SQL Server backup files to eliminate data redundancy

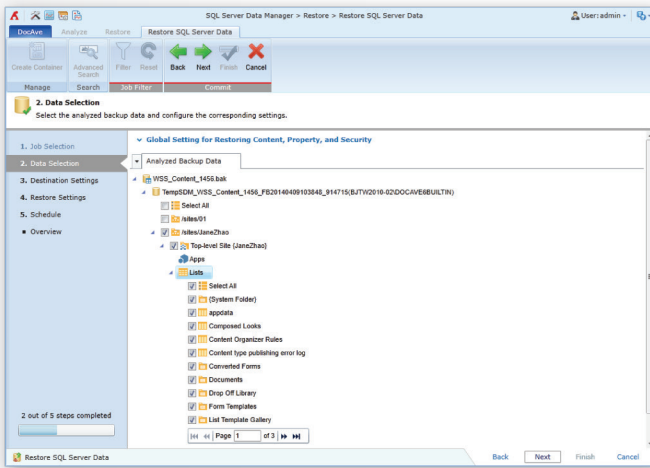


Analysis before Restore

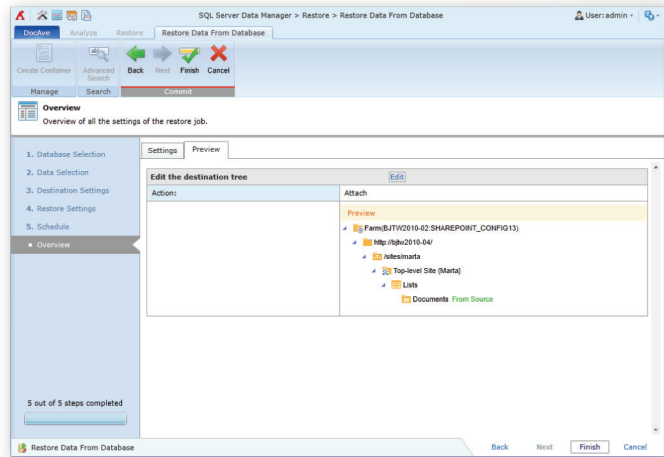
GRANULAR CONTENT RESTORE

- **Restore from SQL Server Backup Files or a Live Database** – Perform item-level recovery of SharePoint content from existing SQL Server backup, VHD or VHDX files or a live database with full fidelity
- **InstaMount Technology for Fast Item-level Recovery** – Fast recovery of individual items to production environments from a full database backup without needing to stage the database
- **Time-based Restore** – Input a specified time range to quickly identify available backup data for restoration, and view detailed backup file information such as the job status (e.g. complete, complete with exception) as well as whether InstaMount was enabled
- **Granular Restore** – Granularly select SharePoint content from the site collection down to item level for restoration, including options to only restore properties or security settings of the selected content
- **Support for SharePoint Components** – Restore SharePoint components including Recycle Bin data, workflows, item-dependent columns and content types, users or groups, BLOB data, apps, as well as item versions to satisfy different critical business needs

- **Comprehensive Mappings** – Update permissions, metadata, or language information upon restoration with comprehensive user, domain, and language mapping
- **Preview** – Preview the destination SharePoint environment before triggering the restore job

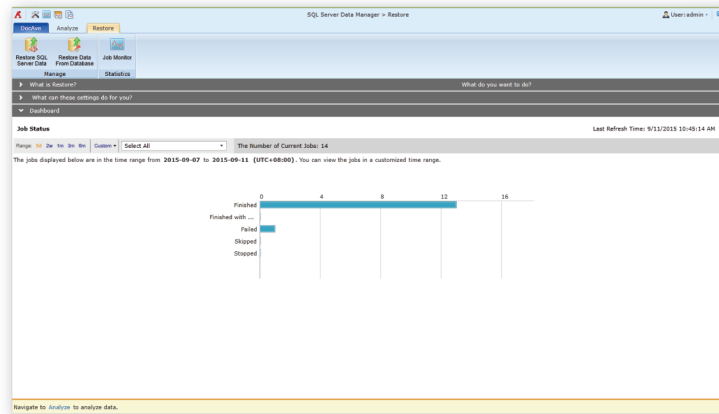


Granular Content Restore



Preview the Destination SharePoint Environment

- **Report on Restore Job Details** – Generate detailed job reports and send email notifications to selected users or groups
- **Job Status Overview** – Obtain a comprehensive overview of restore job statuses and counts in a specific period of time through a report dashboard



Comprehensive Overview of Job Statuses

For a comprehensive list of new features in this release, please view our [DocAve 6 Service Pack 7 Release Notes](#).

How to Buy DocAve

Call: 201.793.1111
 E-mail: Sales@AvePoint.com
 Evaluate DocAve for free at:
www.AvePoint.com/download

AvePoint Global Headquarters
 3 Second Street
 Jersey City, NJ 07311
 Phone: 201.793.1111 Fax: 201.217.8709



For US Government Organizations:
 DocAve can be purchased directly from
 AvePoint or through the GSA website at
www.GSAadvantage.gov.

See why you should choose AvePoint as a strategic SharePoint partner, visit www.avepoint.com/about.
 Join the AvePoint community at www.avepoint.com/community.
 Accessible content available upon request.